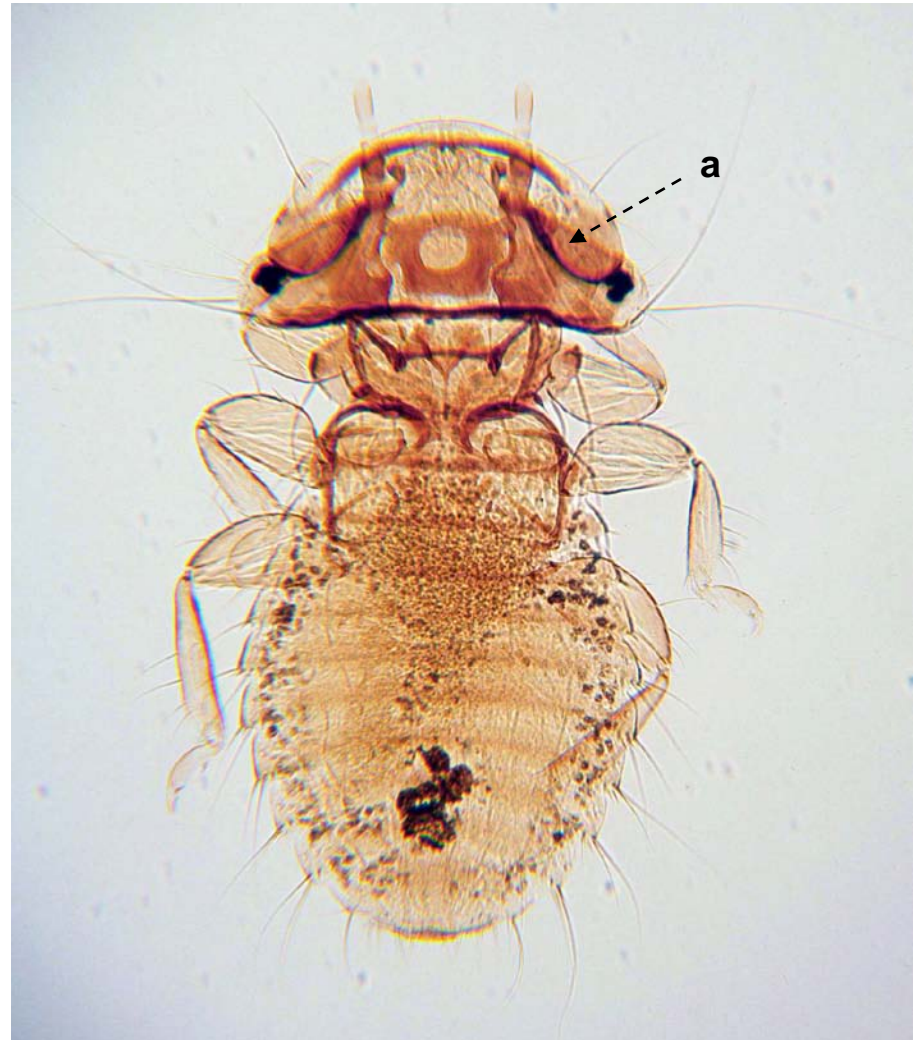
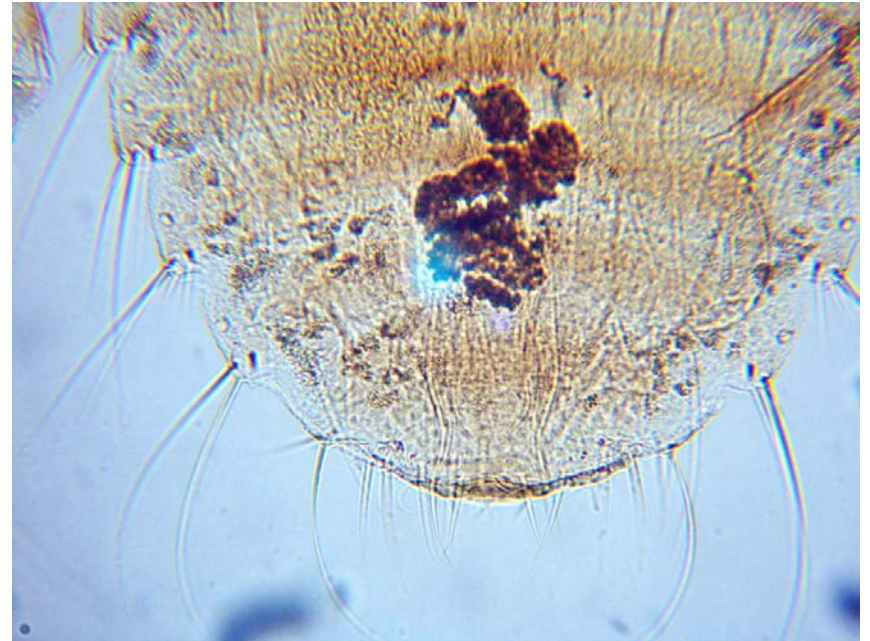


*Machaerilaemus* sp.; female (left), male/nymph (right). Body length: female = 1.32 mm; male = 0.93 mm. Example of “amblyceran” with maxillary palps (mp) exposed and antennae (a) concealed in grooves.



*Machaerilaemus* sp.; posterior of female (left), male/nymph (right).



*Machaerilaemus* sp.: head of female (A); male (B). Legend: a, antenna (segments 1, 2, and 3); d, debris; md, mandibles; mp, maxillary palp.

